

3-BEDROOM

TYPE C1-G

81 sqm / 872 sqft

(inclusive of 6sqm PES)

- BLOCK 6 #01-02
- BLOCK 8 #01-08
- BLOCK 10 #01-12
- BLOCK 12 #01-14
- BLOCK 14 #01-18
- BLOCK 16 #01-22
- BLOCK 18 #01-26

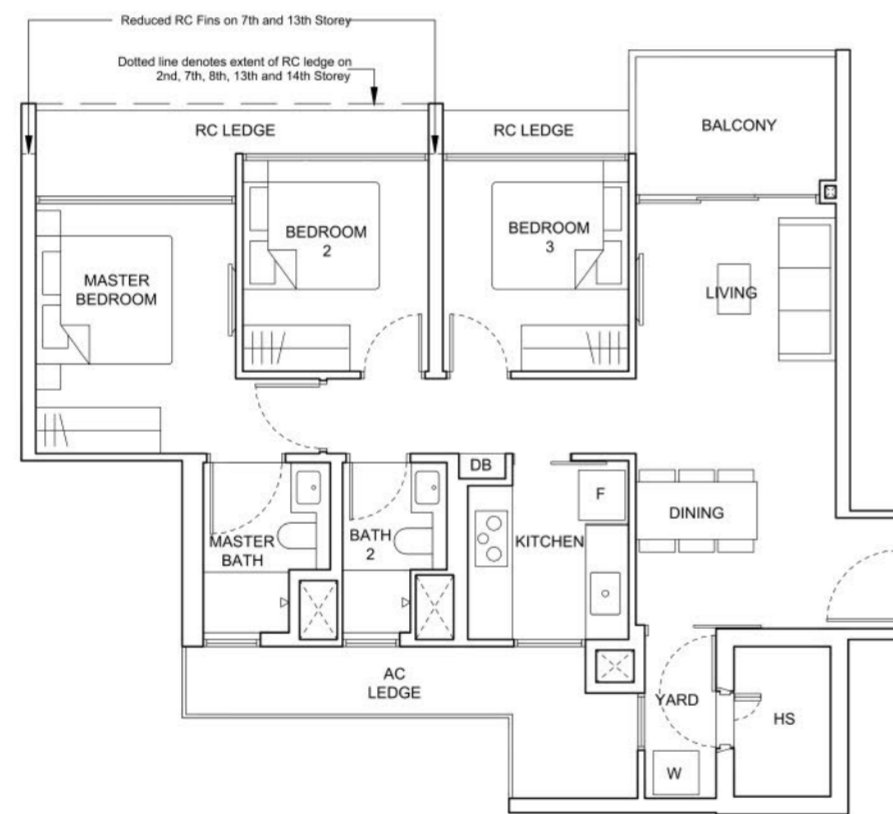


TYPE C1

81 sqm / 872 sqft

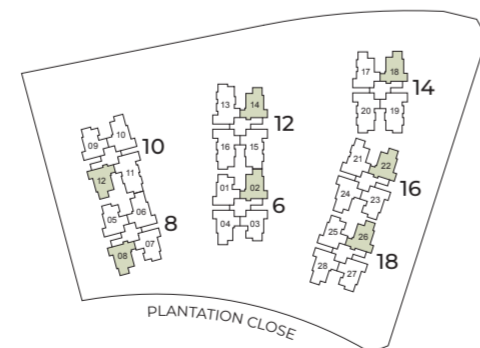
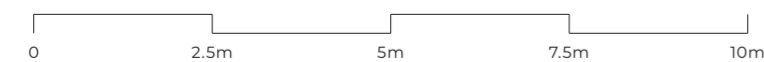
(inclusive of 6sqm Balcony)

- BLOCK 6 #02-02 TO #18-02
- BLOCK 8 #02-08 TO #18-08
- BLOCK 10 #02-12 TO #18-12
- BLOCK 12 #02-14 TO #18-14
- BLOCK 14 #02-18 TO #18-18
- BLOCK 16 #02-22 TO #18-22
- BLOCK 18 #02-26 TO #18-26



LEGEND

- | | | | |
|----|-----------------------|-----|--|
| F | FRIDGE (NOT INCLUDED) | PES | PRIVATE ENCLOSED SPACE |
| W | WASHER (NOT INCLUDED) | AC | AIR CONDITIONER LEDGE (NON-STRATA) |
| DB | DISTRIBUTION BOARD | RC | REINFORCED CONCRETE LEDGE (NON-STRATA) |
| HS | HOUSEHOLD SHELTER | ☐ | VOID SPACE (NON-STRATA) |



KEY PLAN

ALL PLANS ARE SUBJECT TO CHANGES BY THE RELEVANT AUTHORITIES.
MEASUREMENTS ARE APPROXIMATE ONLY AND SUBJECT TO FINAL SURVEY.
INFORMATION ACCURATE AT POINT OF PRINTING.
CG APPROVAL NO.: E520240408-50002-CG01R02 DATED 03 SEPT 2024

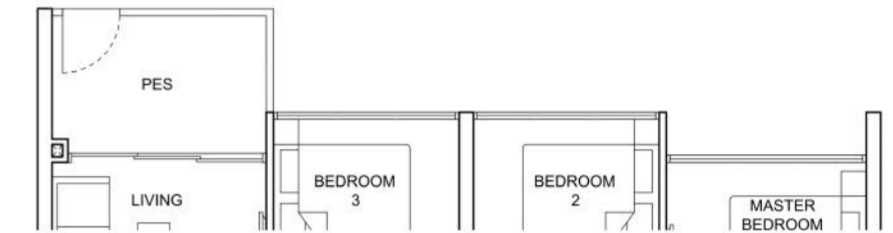
3-BEDROOM + STUDY

TYPE C2-G

82 sqm / 883 sqft

(inclusive of 6sqm PES)

- BLOCK 6 #01-01, #01-03
- BLOCK 8 #01-05, #01-07
- BLOCK 10 #01-09
- BLOCK 16 #01-23
- BLOCK 18 #01-25, #01-27



TYPE C2

82 sqm / 883 sqft

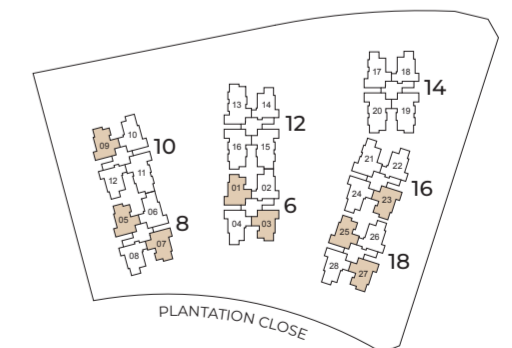
(inclusive of 6sqm Balcony)

- BLOCK 6 #02-01 TO #18-01
- BLOCK 6 #02-03 TO #18-03
- BLOCK 8 #02-05 TO #18-05
- BLOCK 8 #02-07 TO #18-07
- BLOCK 10 #02-09 TO #18-09
- BLOCK 16 #02-23 TO #18-23
- BLOCK 18 #02-25 TO #18-25
- BLOCK 18 #02-27 TO #18-27



LEGEND

- | | | | |
|----|-----------------------|-----|--|
| F | FRIDGE (NOT INCLUDED) | PES | PRIVATE ENCLOSED SPACE |
| W | WASHER (NOT INCLUDED) | AC | AIR CONDITIONER LEDGE (NON-STRATA) |
| DB | DISTRIBUTION BOARD | RC | REINFORCED CONCRETE LEDGE (NON-STRATA) |
| HS | HOUSEHOLD SHELTER | ☐ | VOID SPACE (NON-STRATA) |
| WC | WATER CLOSET | | |



KEY PLAN

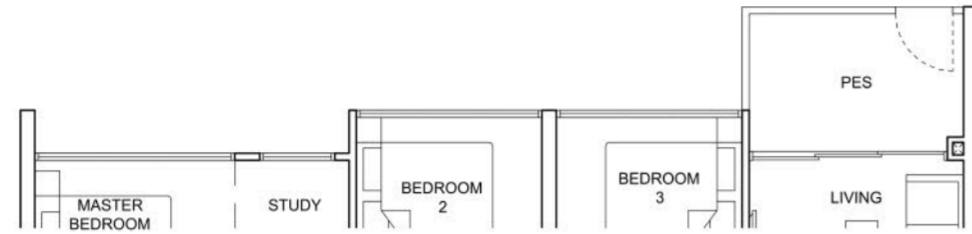
ALL PLANS ARE SUBJECT TO CHANGES BY THE RELEVANT AUTHORITIES.
MEASUREMENTS ARE APPROXIMATE ONLY AND SUBJECT TO FINAL SURVEY.
INFORMATION ACCURATE AT POINT OF PRINTING.
CG APPROVAL NO.: E520240408-50002-CG01R02 DATED 03 SEPT 2024

3-BEDROOM + STUDY

TYPE C3-G

88 sqm / 947 sqft

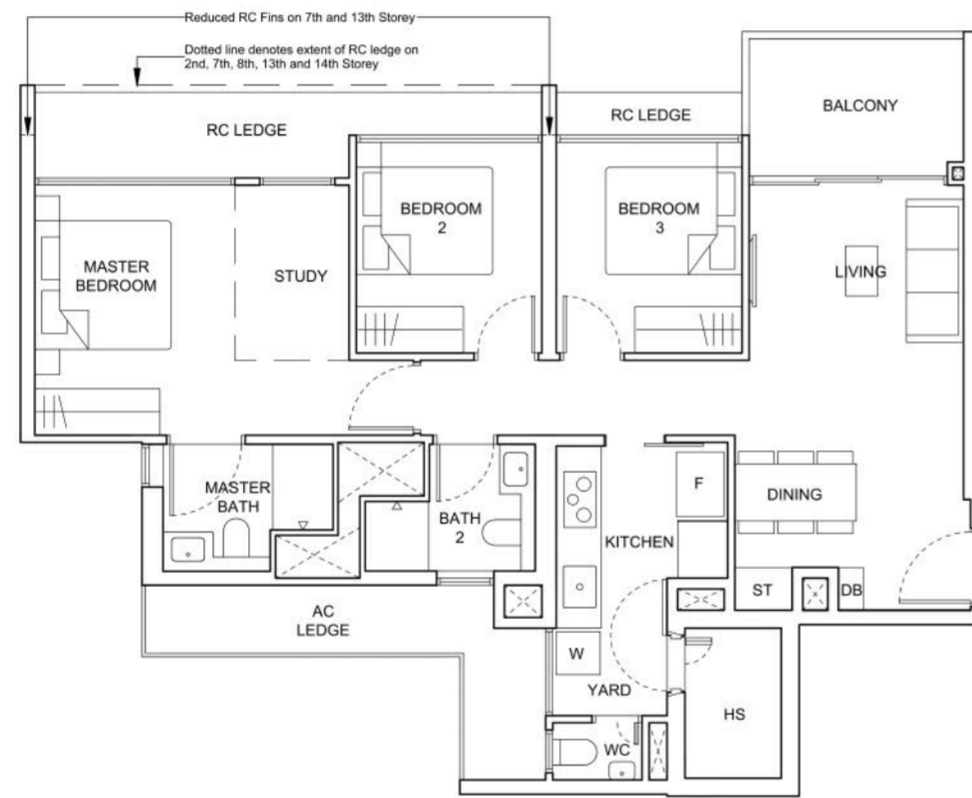
(inclusive of 6sqm PES)
 BLOCK 6 #01-04
 BLOCK 8 #01-06
 BLOCK 10 #01-10
 BLOCK 16 #01-24
 BLOCK 18 #01-28



TYPE C3

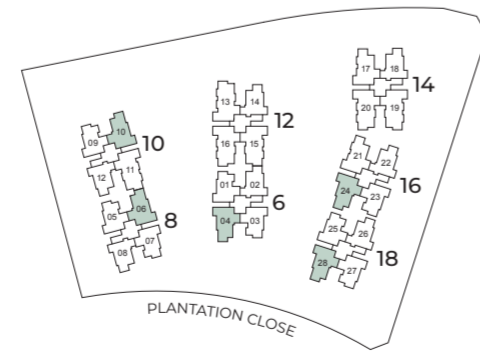
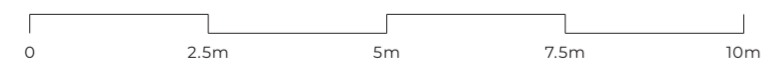
88 sqm / 947 sqft

(inclusive of 6sqm Balcony)
 BLOCK 6 #02-04 TO #18-04
 BLOCK 8 #02-06 TO #18-06
 BLOCK 10 #02-10 TO #18-10
 BLOCK 16 #02-24 TO #18-24
 BLOCK 18 #02-28 TO #18-28



LEGEND

- | | | | |
|----|-----------------------|-----|--|
| F | FRIDGE (NOT INCLUDED) | PES | PRIVATE ENCLOSED SPACE |
| W | WASHER (NOT INCLUDED) | AC | AIR CONDITIONER LEDGE (NON-STRATA) |
| DB | DISTRIBUTION BOARD | RC | REINFORCED CONCRETE LEDGE (NON-STRATA) |
| HS | HOUSEHOLD SHELTER | ☐ | VOID SPACE (NON-STRATA) |
| WC | WATER CLOSET | ST | STORE |



KEY PLAN

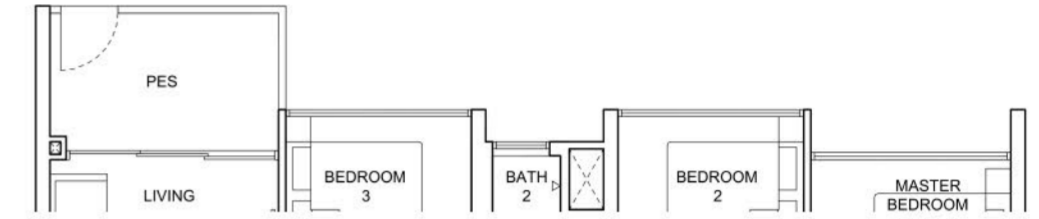
ALL PLANS ARE SUBJECT TO CHANGES BY THE RELEVANT AUTHORITIES.
 MEASUREMENTS ARE APPROXIMATE ONLY AND SUBJECT TO FINAL SURVEY.
 INFORMATION ACCURATE AT POINT OF PRINTING.
 CG APPROVAL NO.: ES20240408-50002-CG01R02 DATED 03 SEPT 2024

4-BEDROOM

TYPE D1-G

94 sqm / 1012 sqft

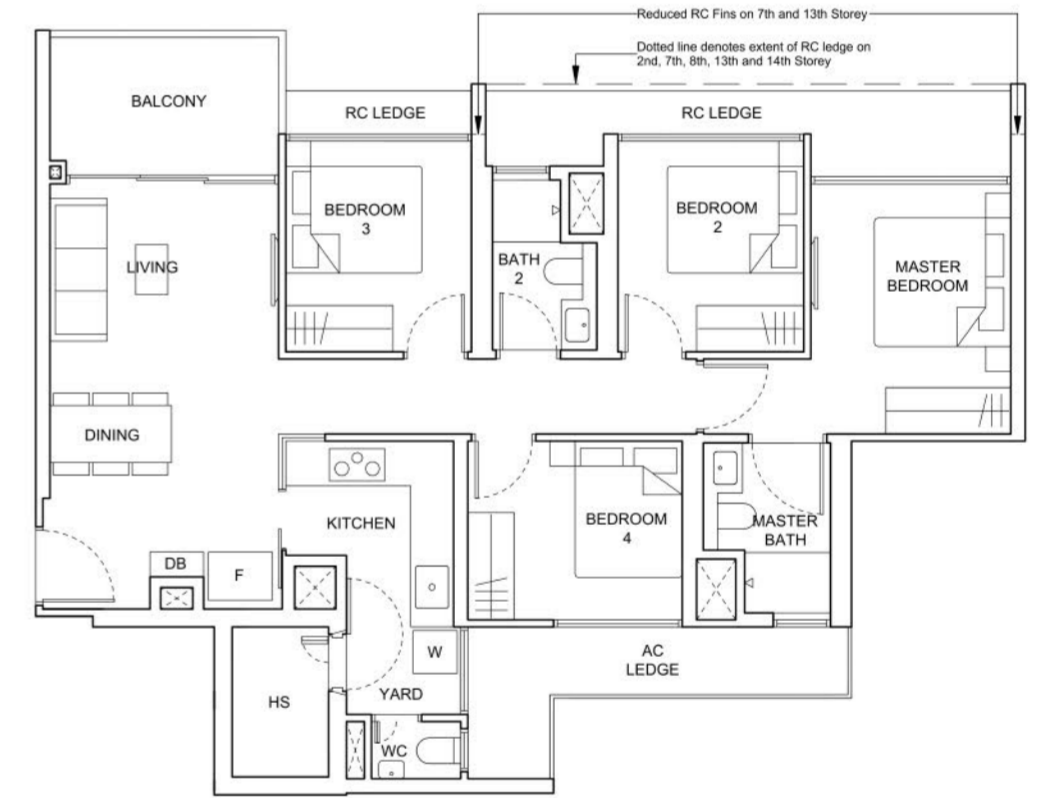
(inclusive of 7sqm PES)
 BLOCK 14 #01-17
 BLOCK 16 #01-21



TYPE D1

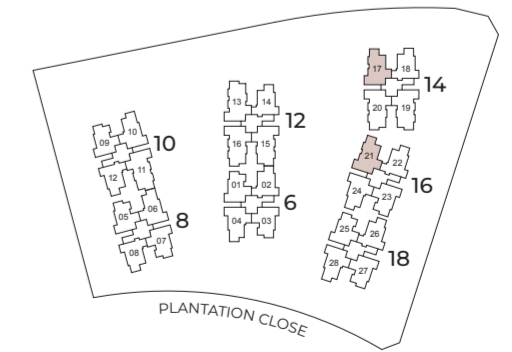
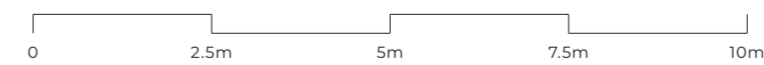
94 sqm / 1012 sqft

(inclusive of 7sqm Balcony)
 BLOCK 14 #02-17 TO #18-17
 BLOCK 16 #02-21 TO #18-21



LEGEND

- | | | | |
|----|-----------------------|-----|--|
| F | FRIDGE (NOT INCLUDED) | PES | PRIVATE ENCLOSED SPACE |
| W | WASHER (NOT INCLUDED) | AC | AIR CONDITIONER LEDGE (NON-STRATA) |
| DB | DISTRIBUTION BOARD | RC | REINFORCED CONCRETE LEDGE (NON-STRATA) |
| HS | HOUSEHOLD SHELTER | ☐ | VOID SPACE (NON-STRATA) |
| WC | WATER CLOSET | | |



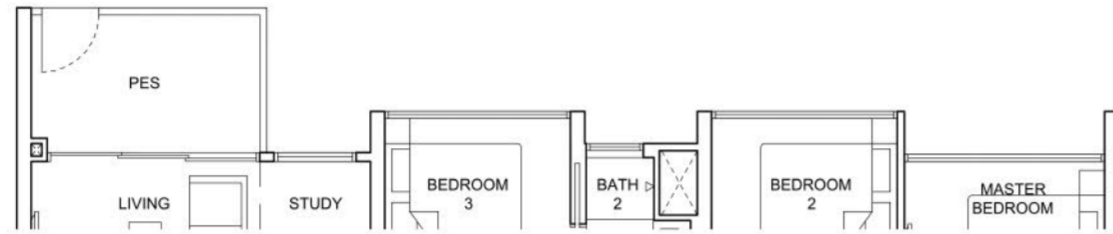
KEY PLAN

ALL PLANS ARE SUBJECT TO CHANGES BY THE RELEVANT AUTHORITIES.
 MEASUREMENTS ARE APPROXIMATE ONLY AND SUBJECT TO FINAL SURVEY.
 INFORMATION ACCURATE AT POINT OF PRINTING.
 CG APPROVAL NO.: ES20240408-50002-CG01R02 DATED 03 SEPT 2024

4-BEDROOM + STUDY

TYPE D2-G 108 sqm / 1163 sqft

(inclusive of 7sqm PES)
 BLOCK 10 #01-11
 BLOCK 12 #01-13, #01-15
 BLOCK 12 #01-16*
 BLOCK 14 #01-19
 BLOCK 14 #01-20*



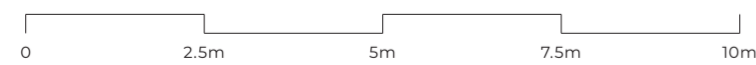
TYPE D2 108 sqm / 1163 sqft

(inclusive of 7sqm Balcony)
 BLOCK 10 #02-11 TO #18-11
 BLOCK 12 #02-13 TO #18-13
 BLOCK 12 #02-15 TO #18-15
 BLOCK 12 #02-16* TO #18-16*
 BLOCK 14 #02-19 TO #18-19
 BLOCK 14 #02-20* TO #18-20*

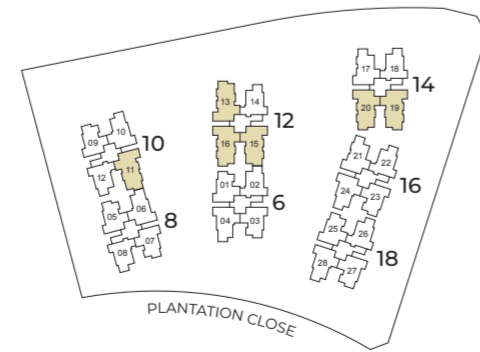


LEGEND

F	FRIDGE (NOT INCLUDED)	PES	PRIVATE ENCLOSED SPACE
W	WASHER (NOT INCLUDED)	AC	AIR CONDITIONER LEDGE (NON-STRATA)
DB	DISTRIBUTION BOARD	RC	REINFORCED CONCRETE LEDGE (NON-STRATA)
HS	HOUSEHOLD SHELTER	☐	VOID SPACE (NON-STRATA)
WC	WATER CLOSET	*	MIRRORED UNIT

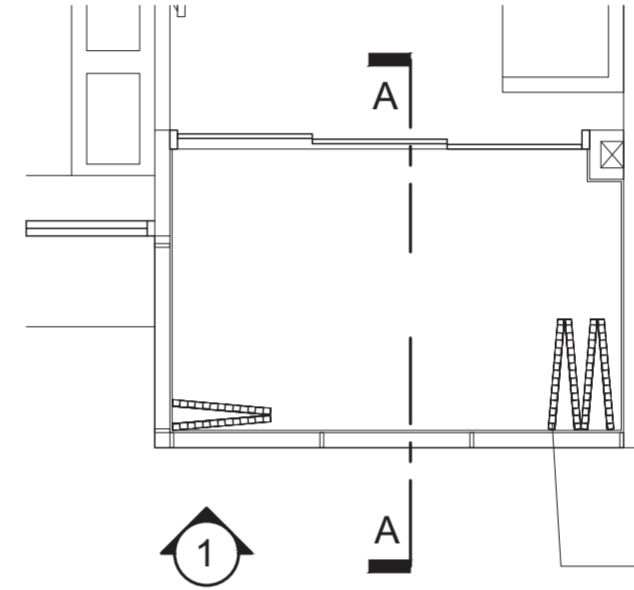


ALL PLANS ARE SUBJECT TO CHANGES BY THE RELEVANT AUTHORITIES.
 MEASUREMENTS ARE APPROXIMATE ONLY AND SUBJECT TO FINAL SURVEY.
 INFORMATION ACCURATE AT POINT OF PRINTING.
 CG APPROVAL NO.: E520240-08-50002-C01R02 DATED 03 SEPT 2024

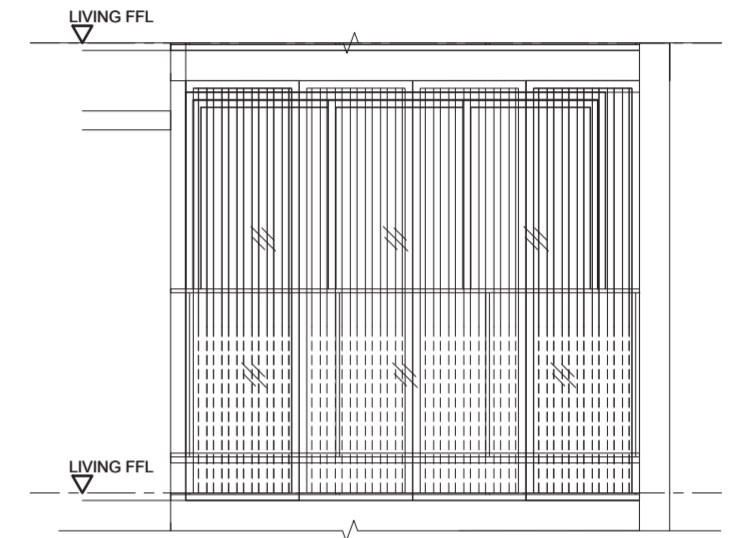


KEY PLAN

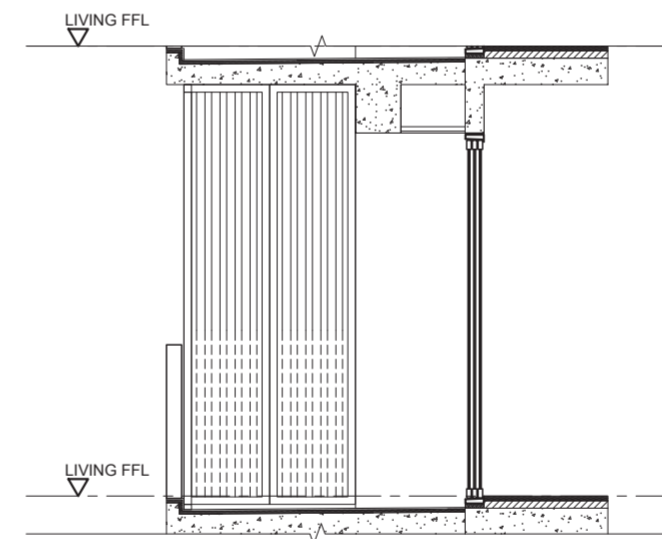
BALCONY SCREEN



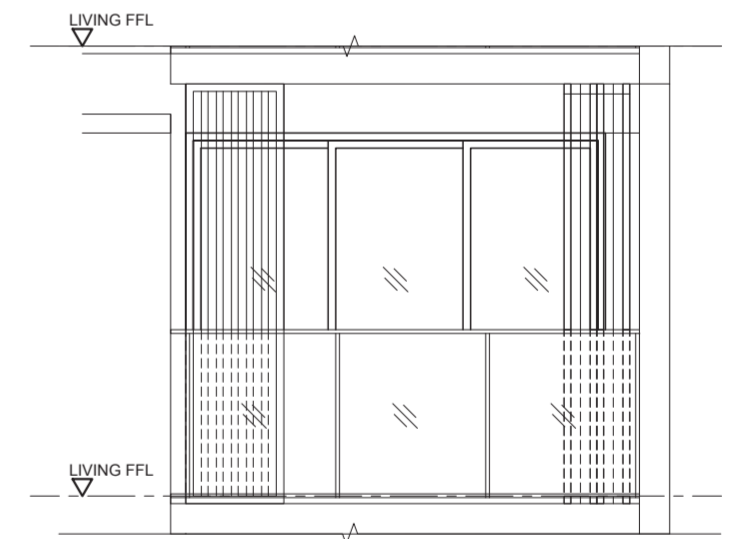
TYPICAL BALCONY SCREEN
(OPEN & FULLY RETRACTED)



TYPICAL BALCONY SCREEN
(CLOSED)



TYPICAL BALCONY SCREEN
(CLOSED)

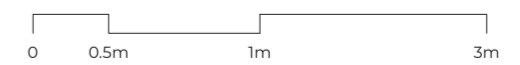


TYPICAL BALCONY SCREEN
(OPEN)

POWDER COATED ALUMINUM
 SCREEN PANELS CAPABLE OF
 BEING DRAWN OPEN TO ALLOW
 NATURAL VENTILATION WITHIN
 THE BALCONY AT ALL TIMES

NOTES:

- BALCONY SCREEN IS NOT PROVIDED FOR THIS DEVELOPMENT.
- THE BALCONY SHALL NOT BE ENCLOSED UNLESS WITH THE SCREEN APPROVED BY THE RELEVANT AUTHORITIES.
- FINAL SELECTION OF MATERIAL, COLOUR AND DETAILING OF THE SCREEN IS SUBJECT TO MCST APPROVAL.
- APPROVAL FROM MCST IS REQUIRED BEFORE INSTALLATION.
- OWNER MAY OPT TO PRE-INSTALL THE SCREEN.
- ALL INSTALLATION FEES TO BE BORNE BY THE OWNER.
- MEASUREMENTS ARE APPROXIMATE ONLY AND SUBJECT TO FINAL SURVEY.



PRINTING MAY ALTER THE SCALE OF THE DRAWING.
 PLEASE VERIFY THE SCALE ON THE ABOVE SCALE BAR.